

BARAHA

Creating Documents in
Hindi, Gujarati and Telugu

VIDYALAYA, INC.

January 22, 2012

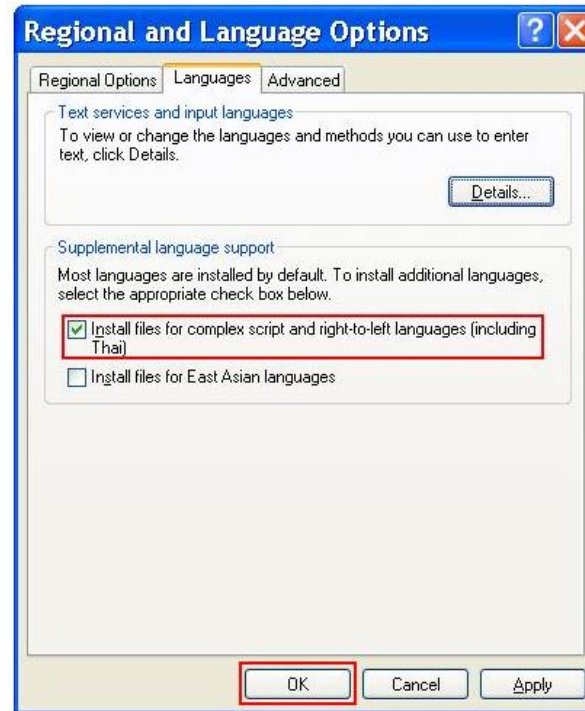
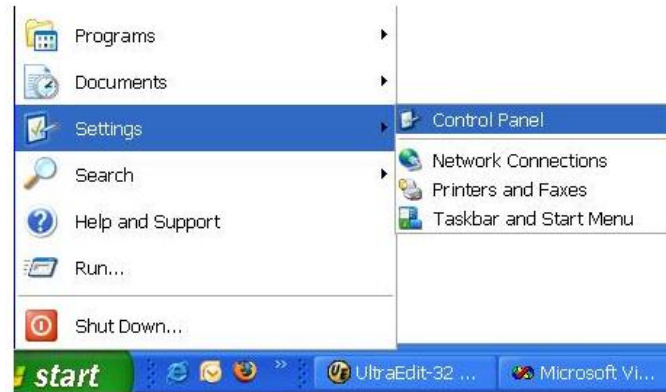
Workshop Agenda

- Importance of learning and using typing software for Vidyalaya teachers.
- Review the installation process for Baraha
- Baraha program and its components
- Create a sample test/quiz and a worksheet using Baraha
- Other tools available for typing in Indian languages.

Installation

- Please go to this link
<http://www.vidyalaya.us/shiksha/baraha9.exe>
- Follow the instructions below to enable Indian languages in Windows XP. ([Instructions for other versions of Windows operating systems](#) may slightly vary.)
- From the **Control Panel** start the **Regional and Language Options** applet. Select **Install files for complex script and right-to-left languages (including Thai)** option. Click **OK** button to apply the changes.

Installation



Technical Point – ANSI Vs. UNICODE

- **ANSI Text:**

The Indian language text that uses Baraha Fonts such as BRH Kannada, BRH Devanagari, so on...

- **UNICODE Text:**

The Indian language text that uses Unicode fonts such as Tunga, Mangal, so on..

- Baraha allows both, although for web-related and email usage UNICODE is the standard.

Baraha Programs

- Baraha
 - Main editor that shows both the Romanized and Indian languages on the same screen. Can be used to export into other program, e.g. Word, E-Mail, etc. using either UNICODE or ANSI fonts.
- BarahaPad
 - Unicode text editor for Indian languages. It has basic text editing features such as **Bold**, *Italic*, Underline, Font, Font Size, Text Color, Alignment, Bullets and Indentation.
- BarahaDirect
 - It can be used to type Indian language text directly in applications such as MS Office, PageMaker, Internet Explorer, Notepad, so on... When BarahaDirect program is started, it shows as an icon in the system tray at the bottom-right portion of the screen.

BARAHA (Main Editor)

The screenshot shows the Baraha software interface with several components labeled:

- Standard Toolbar:** Located at the top of the window, containing various icons for file operations and editing.
- Output Window:** A large central window displaying the rendered text in Devanagari script: "मेरा नाम प्रवीन है। आप कैसे हैं? हम सब यहाँ बरह का उपयोग करना सीख रहे हैं।"
- Preview Window:** A smaller window below the output window showing the text as it would appear in a browser: "आप कैसे हैं? meraa naam praveen hai | aap kaise haiM? ham sab yahaa~M baraha kaa upayoga karanaa seekh rahe haiM |".
- Input Window:** A window at the bottom where the user enters text in a transliterated format.
- Help Window:** A window on the right side providing information about the transliteration scheme, including a list of vowels and consonants.
- Formatting Toolbar:** A vertical toolbar on the left side of the output window, containing icons for bold, italic, underline, and other text formatting options.
- InternetToolbar:** A toolbar at the bottom of the window, containing icons for navigation and other internet-related functions.

The Help Window contains the following text:

Writing Devanagari words using Baraha transliteration scheme is as easy as writing our names in English. मेरा भारत महान can be written as **merA bhArat mahAn**. Devanagari script used for Sanskrit, Hindi, and Marathi languages are supported in Baraha. Other languages such as Konkani, Sindhi and Nepali that use devanagari script, can also be used. The transliteration rules are shown below with examples.

See: [Transliteration Examples](#)

Vowel:

अ = a, आ = A,aa, इ = i, ई = I,ee, उ = u, ऊ = U,oo, ऋ = Ru, ॠ = RU, लृ = ~lu, लृ = ~IU, ऐ(ँ) = ~e,~a, ऐ = E, ए = e, ऐ = ai, औ = ~o, ओ = O, ओ = o, औ = au,ou

◌̣ = ~M
◌̇ = M
◌̈ = H

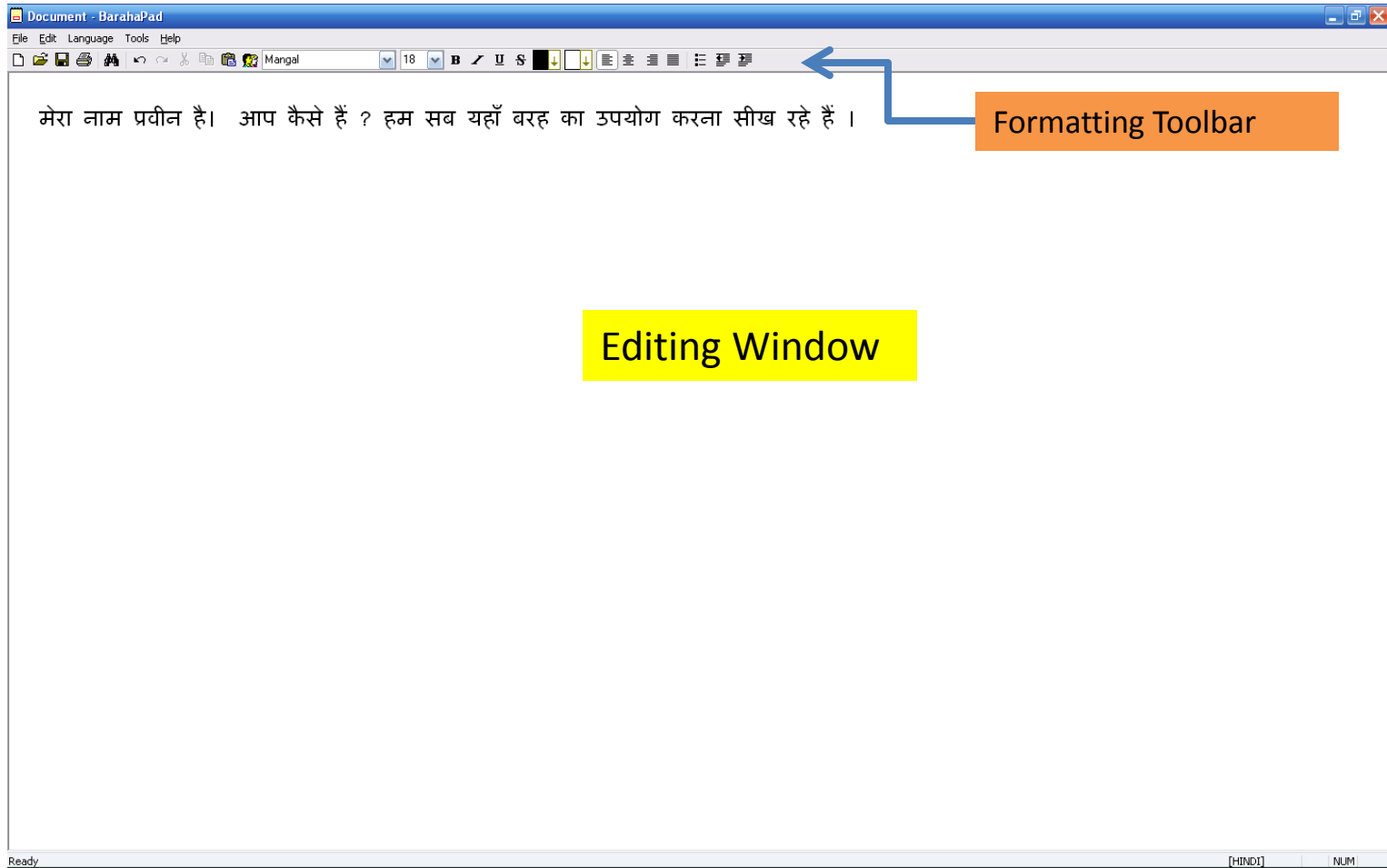
Consonant:

क = k, ख = K,kh, ग = g, घ = G,gh, ङ = ~g
च = c,ch, छ = C,Ch, ज = j, झ = J,jh, ञ = ~j
ट = T, ठ = Th, ड = D, ढ = Dh, ण = N
त = t, थ = th, द = d, ध = dh, न = n, ण = nx
प = p, फ = P,ph, ब = b, भ = B,bh, म = m

य = y, र = r, ॠ = rx, ल = l, ळ = L, ळ = Lx, व = v,w, श = S,sh, ष = Sh, स = s, ह = h,~h

Note: ॠ is used in Marathi language

BarahaPad



BarahaDirect

When BarahaDirect is started, it shows an icon in the system tray at the bottom-right portion of the screen.

To type Indian language text:

- Open the target application (say MS Word) language text.
- In BarahaDirect, select the desired Indian language.
- Select the appropriate fonts in the target application.
- Start typing.



BarahaDirect icon in the system tray.

To type English text:

- Choose **Language-->English** menu command by clicking on system tray icon.
- Select the English font in the target application.
- Continue typing.

Note: You may press **F11** (or **F12**) key anytime to switch between Indian language and English.

Sample Worksheet

Hindi and Gujarati alphabets:

म	स	क	ल	त	श	थ	र	द	व	ज	ह
भ	ख	घ	ङ	च	छ	ज	झ	ट	ठ	ड	ढ

Hindi word:		Gujarati word:	
दादा	grandfather	દાદા	grandfather
बाल	hair	વાળ	hair
विमान	airplane	વિમાન	airplane
पानी	water	પાણી	water
बिल्ली	cat	બિલાડી	cat
जंगल	jungle	જંગલ	jungle
पूजा	religious ceremony	પૂજા	religious ceremony
पूंछ	tail	પુછડી	tail
गोल	circle	ગોળ	circle
कौआ	crow	સૌ	all
प्रार्थना	prayer	પ્રાર્થના	prayer

Hindi sentences:	Gujarati sentences:
बच्चा रो रहा है!	બાળક રડે છે.
अपने जूते उतारो!	તમારા ચંપલ કાઢો.
तुम्हारे पास चाबी है?	તમારી પાસે ચાવી છે?
मैंने अपनी घड़ी खो दी!	મારુ ઘડિયાળ ખોવાઈ ગયું.

Non-Typical Transliterations

Hindi

- क्ष - kSh
- ण - N
- ज्ञ - j~j
- ॐ - oum
- श - sh
- ष - Sh
- न् - n^^
- ङ - ~gg
- ञ - ~j
- ण - N
- ङ - Dx
- ढ - Dhx
- फ़ - phx
- ज़ - jx

Printing / Output

- Can print from BarahaPad, Microsoft Word to a printer directly
- Print to a PDF file using freeware pdf converter utilities (i.e. pdf995). Make sure to embed fonts in the Word document for easy sharing of pdf files.
- For web publishing or embedding fonts in email must use UNICODE fonts

Other Transliteration Tools

- Google
- Itrans (has a large database of Hindi songs, bhajans, scriptures)
- Google Translate (translate.google.com)